

Used in similes and metaphors to describe a very energetic or tumultuous person or process; Happening or developing very quickly.

/ (ˈwɪərˌlɪnd /

## Whirlwind

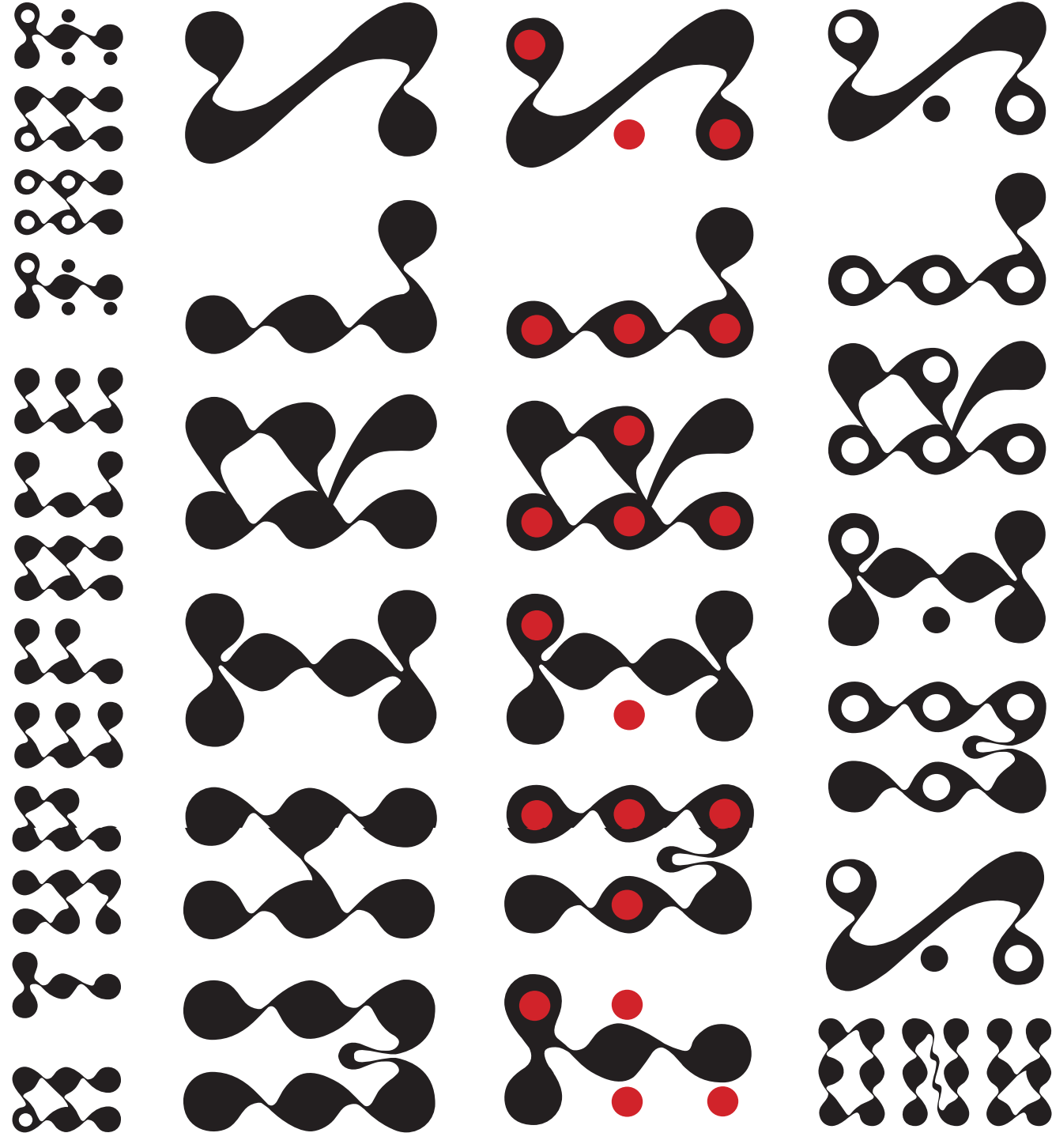


The Creation



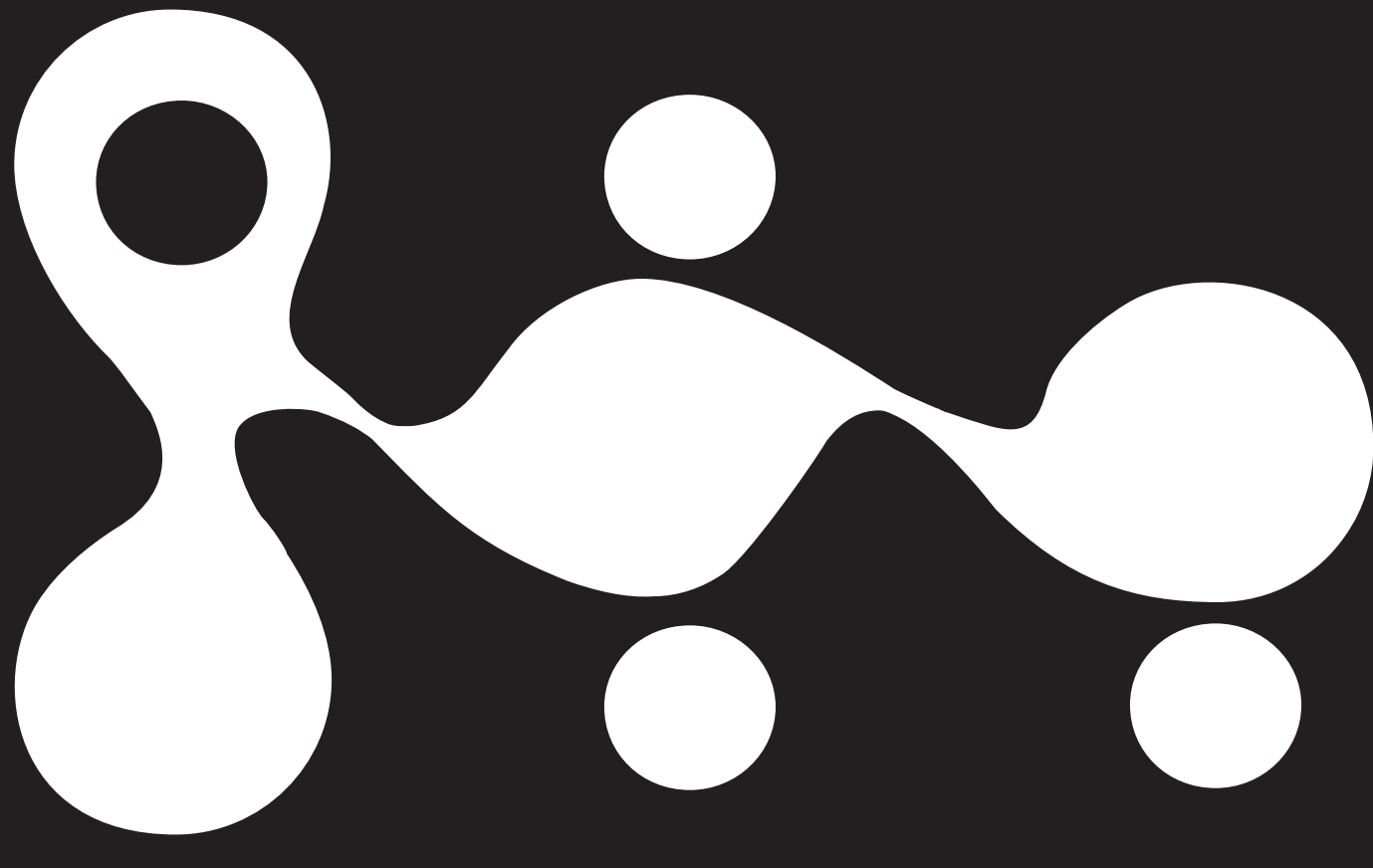
## Behind Whirlwind

The Whirlwind typeface developed rapidly with a variety of changes along the way. The typeface originated from braille with the idea that one could learn braille by pairing it with a letter underneath. That way as someone is reading a word, they can visually see the braille dots as well. Besides this, the concept of integrating braille with a well-designed typeface was to allow for accessibility for all. These ideas started the beginning of Whirlwind. The braille came first which helped create a structure for the typeface. From there, the braille and its grid system were used to create the base shapes of the typeface. After many sketch iterations on how to connect the connect the shapes, the swirling pattern of Whirlwind was born. Once Whirlwind and Whirlwind Braille were created, the idea to integrate them together to allow for a chic black and white accessible typeface came to mind. That was when Whirlwind Integrated was born.

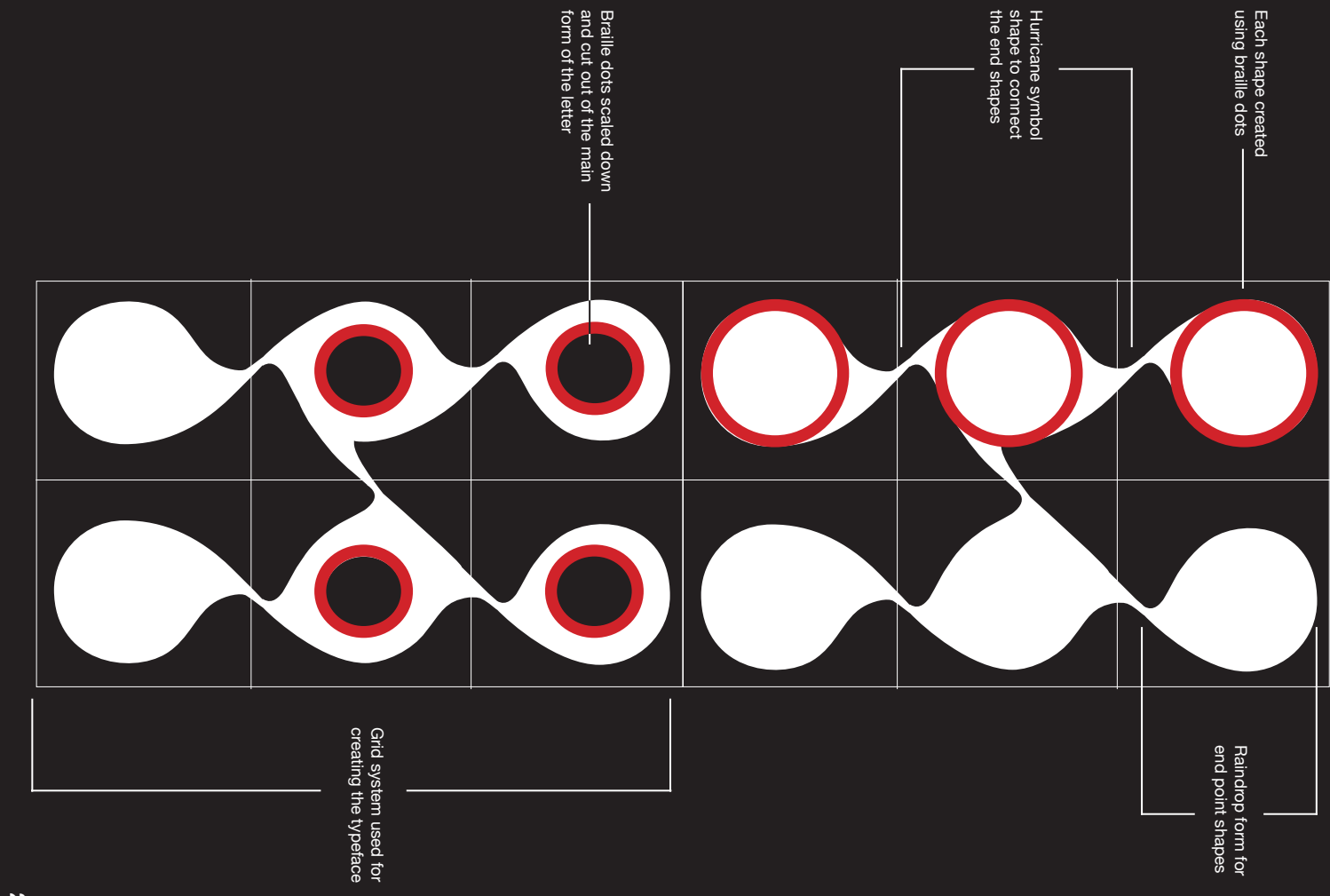


## Characteristics

Whirlwind's characteristics fit perfectly with its name! Its high contrast strokes along with the large dots create a trippy tear drop shape that then gets repeated throughout the letterforms. When the letters appear next to one another, it creates a beautiful typeface that is energetic. Each letter in this typeface varies a bit in some way shape or form with noticeable differences appearing in the letters: B, D, G, K, M, O, S, V, W, X, Z. These unique letters have extended tear drop shapes and creative squiggly lines that help distinguish the type of letter that they are all while maintaining the overall feeling of this typeface. The unique letters in Whirlwind help bring the typeface to life by creating visually pleasing surprises and preventing it from feeling overly repetitive. Whirlwind on its own is a beautiful and twirly typeface which only gets more beautiful when its braille gets integrated into it.

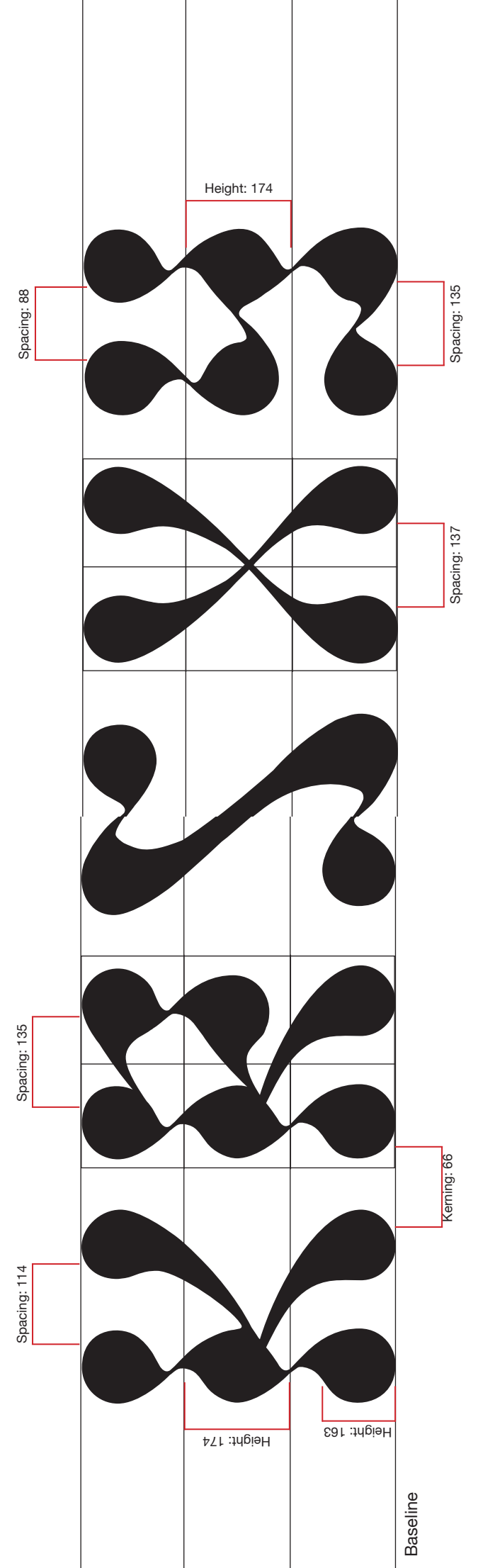
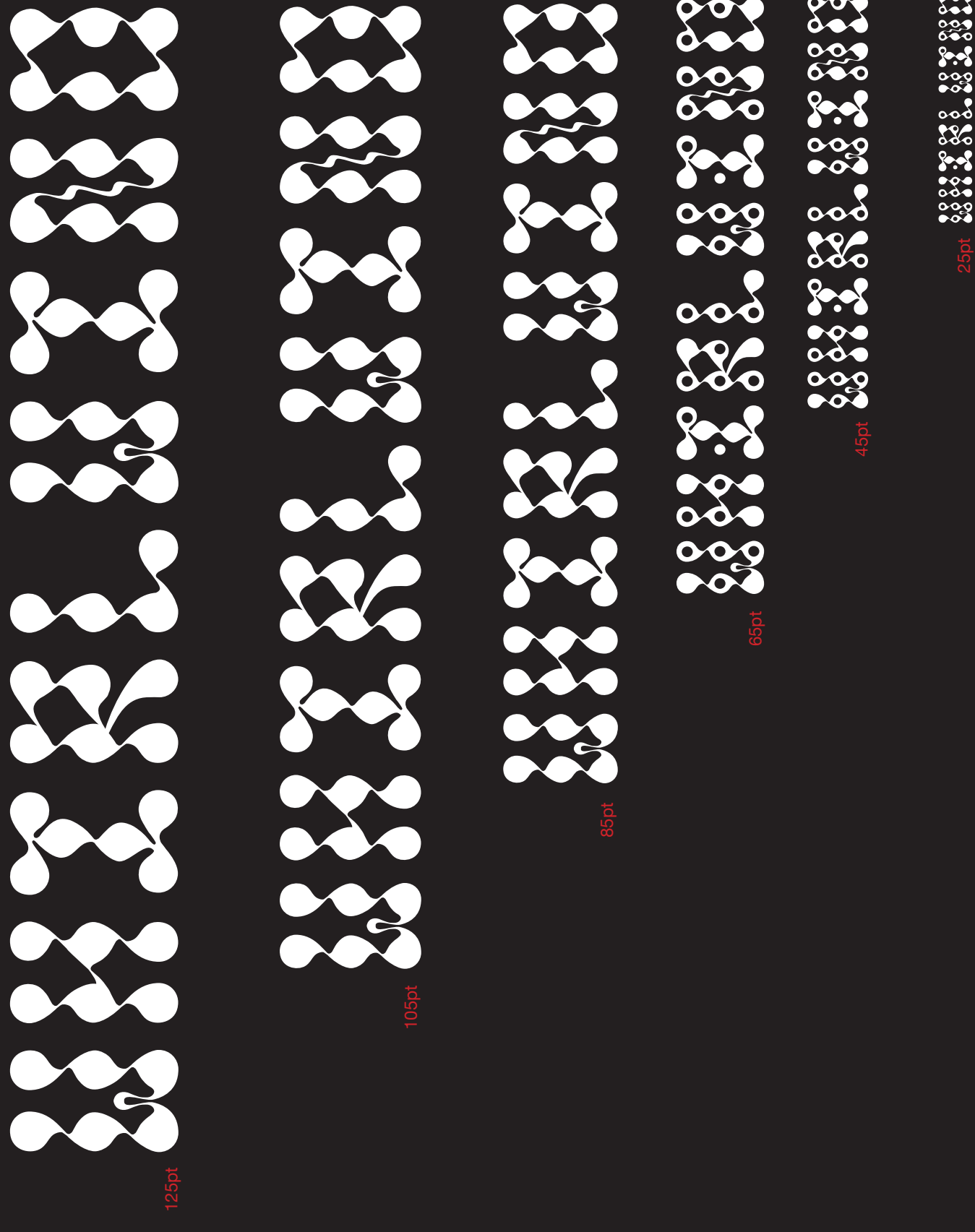






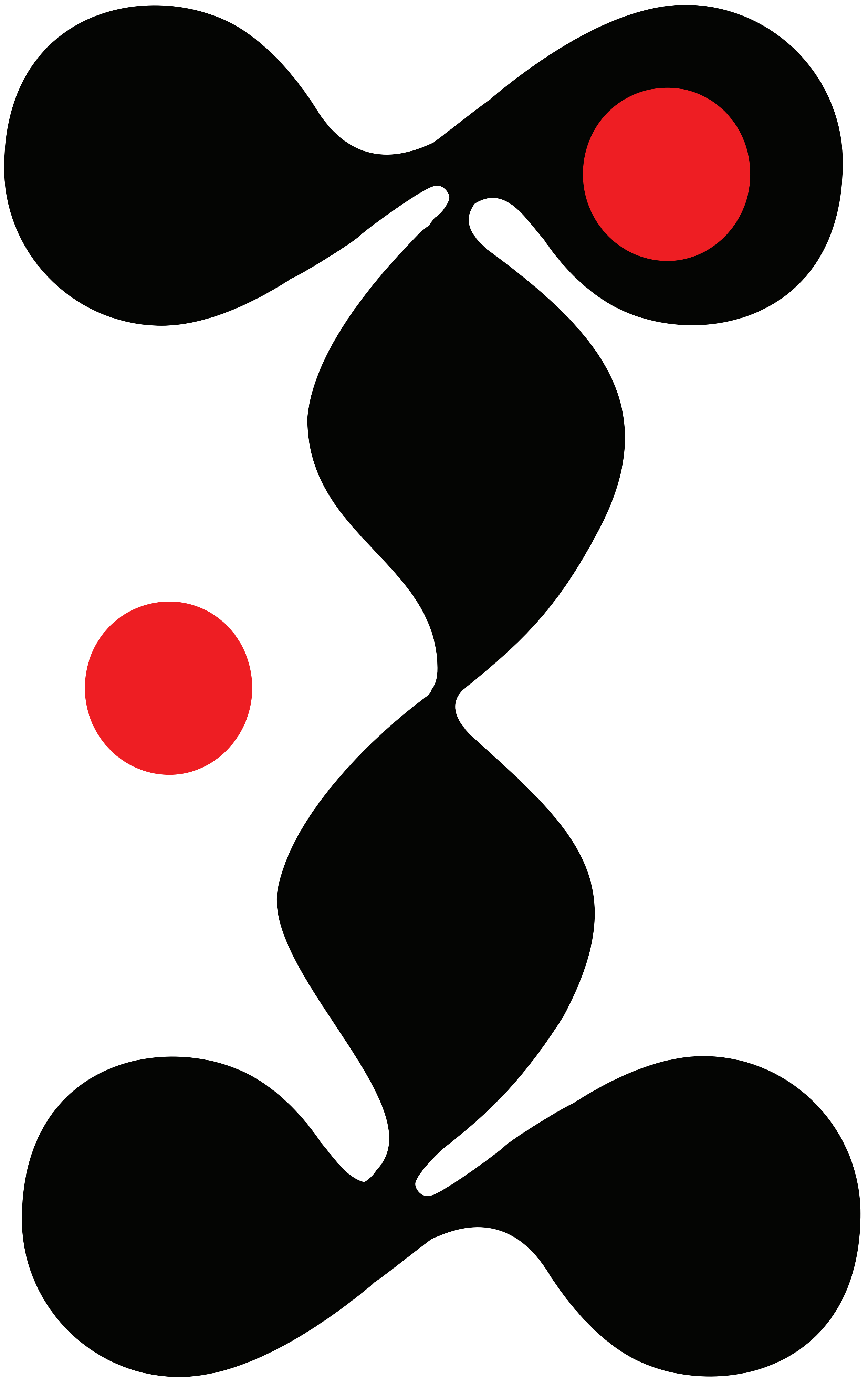
The Whirlwind Typeface is made on the braille grid system which consists of two columns and three rows. Each letter form is created out of repeated tear drop shapes, some of which are extended and shaped to help create the form of the letter. Each base of the tear drop shape is made out of braille dots, which help visually show the underlying braille system. With Whirlwind Integrated, Braille dots were added to each letter form and sized down to fit inside of the letter so that they can visually be seen in the letter form. Not only that, but if this typeface were to be printed, those dots would have the opportunity to become three dimensional so that way they could be read by someone who reads using braille. As stated before, the Whirlwind consists of three alternative versions Whirlwind Braille, Whirlwind Regular, and Whirlwind Integrated. Each of these versions are best viewed in large scale with the smallest size not being any smaller than 25pt.

## The System



This mono spaced typeface is visually tall with small kerning in between the letter forms. The kerning between each of the letters I's is approximately 66. Each tear drop shape on the ends have a height of 163 while the middle tear drop shapes (also can be called hurricane

symbol shapes) have a height of 174. When added together, the total height is 500. Unlike most typefaces, Whirlwind doesn't have an x-height, ascenders, or descenders with all the letterforms being the same height.

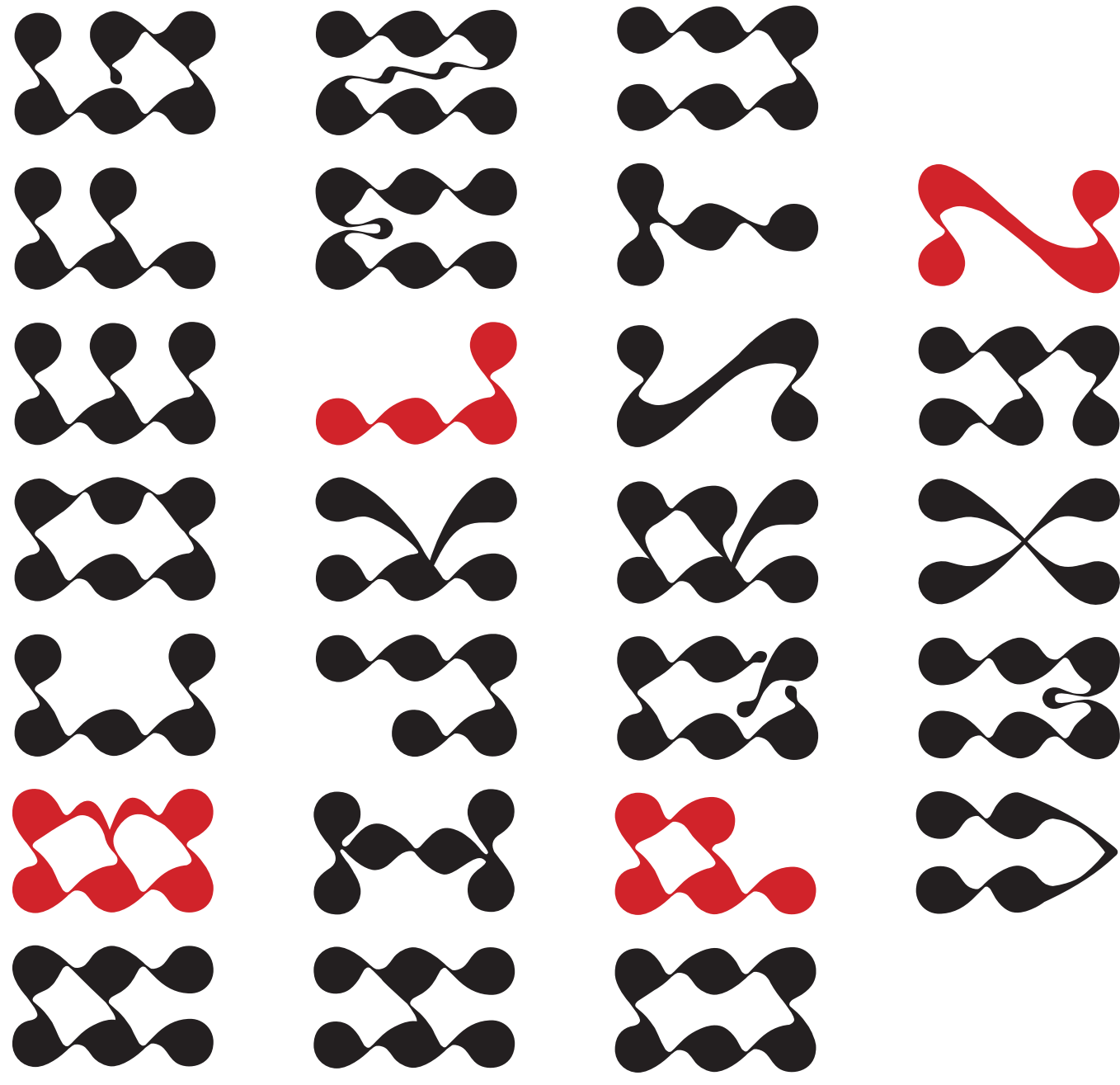


## Whirlwind Braille

Whirlwind Braille is where the journey of the Whirlwind typeface began. Whirlwind Braille was made to accommodate the Whirlwind typeface, so the dots have been made smaller in order to fit comfortably inside of the Whirlwind typeface.

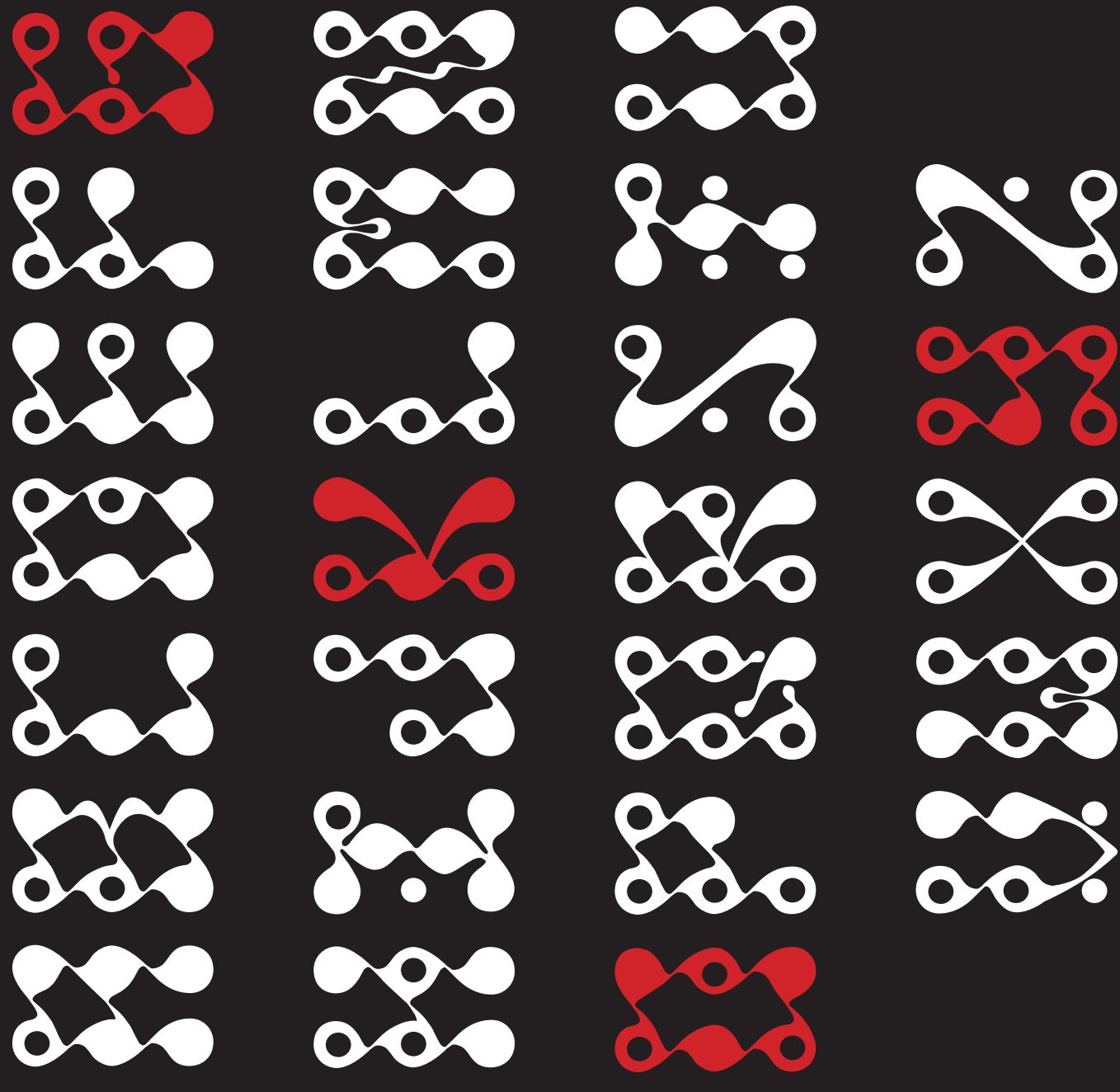


## The Specimen



## Whirlwind Regular

Whirlwind is the result of connecting the dots from braille in an organic manner. This typeface is very much a display typeface and is most legible in larger type sizes. This typeface is intended to be used in posters for a variety of events like dances and concerts and on CDs and albums.



## Whirlwind Integrated

Whirlwind Integrated is the result of combining Whirlwind Braille and Whirlwind together. Just like Whirlwind, this typeface is intended to be used in posters for events like dances and concerts and on CDs and albums.



WORLDWIDE

The Creation



## Whirlwind

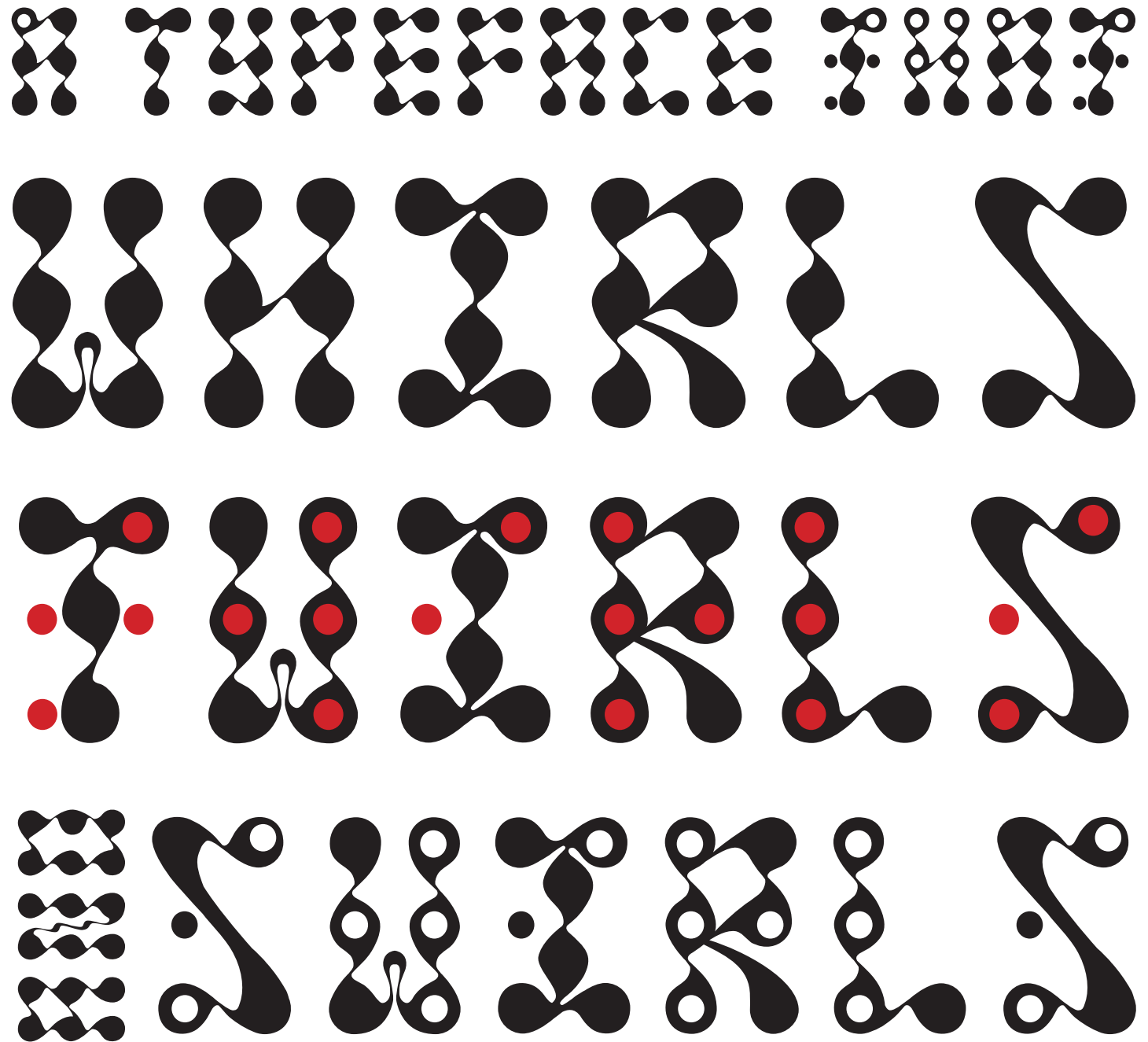
/ ' (h)wɜrlˌwɪnd /

Used in similes and metaphors to describe a very energetic or tumultuous person or process; Happening or developing very quickly.



## Behind Whirlwind

The Whirlwind typeface developed rapidly with a variety of changes along the way. The typeface originated from braille with the idea that one could learn braille by pairing it with a letter underneath. That way as someone is reading a word, they can visually see the braille dots as well. Besides this, the concept of integrating braille with a well-designed typeface was to allow for accessibility for all. These ideas started the beginning of Whirlwind. The braille came first which helped create a structure for the typeface. From there, the braille and its grid system were used to create the base shapes of the typeface. After many sketch ideations on how to connect the connect the shapes, the swirling pattern of Whirlwind was born. Once Whirlwind and Whirlwind Braille were created, the idea to integrate them together to allow for a chic black and white accessible typeface came to mind. That was when Whirlwind Integrated was born.



## Characteristics

Whirlwind's characteristics fits perfectly with its name! Its high contrast strokes along with the large dots create a trippy tear drop shape that then gets repeated throughout the letterforms. When the letters appear next to one another, it creates a beautiful typeface that is energetic. Each letter in this typeface varies a bit in some way shape or form with noticeable differences appearing in the letters, B, D, G, K, M, Q, S, V, W, X, Z. These unique letters have extended tear drop shapes and creative squiggly lines that help distinguish the type of letter that they are all while maintaining the overall feeling of this typeface. The unique letters in Whirlwind help brings the typeface to life by creating visually pleasing surprises and preventing it from feeling overly repetitive. Whirlwind on its own is a beautiful and twirly typeface which only gets more beautiful when its braille gets integrated into it.



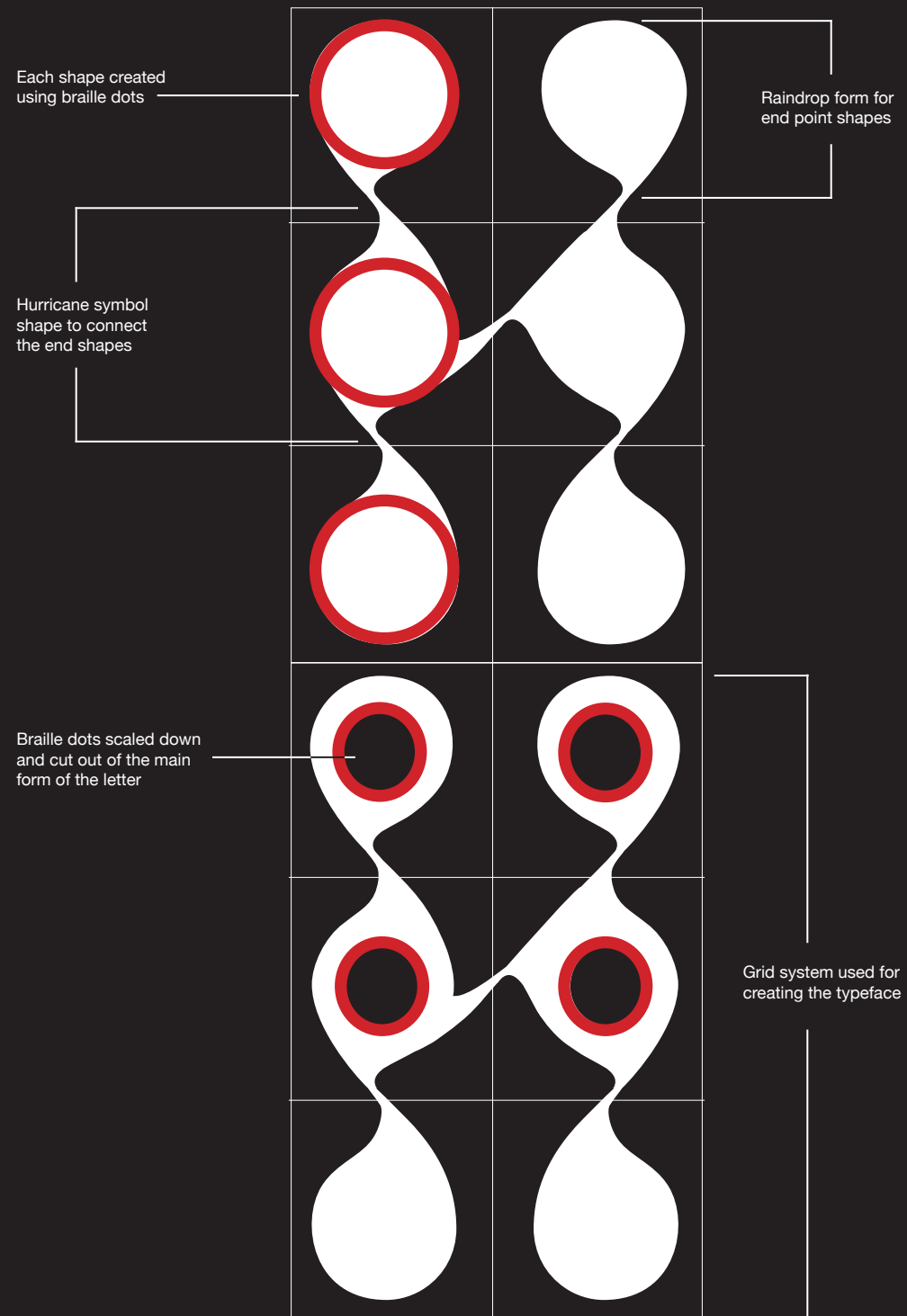


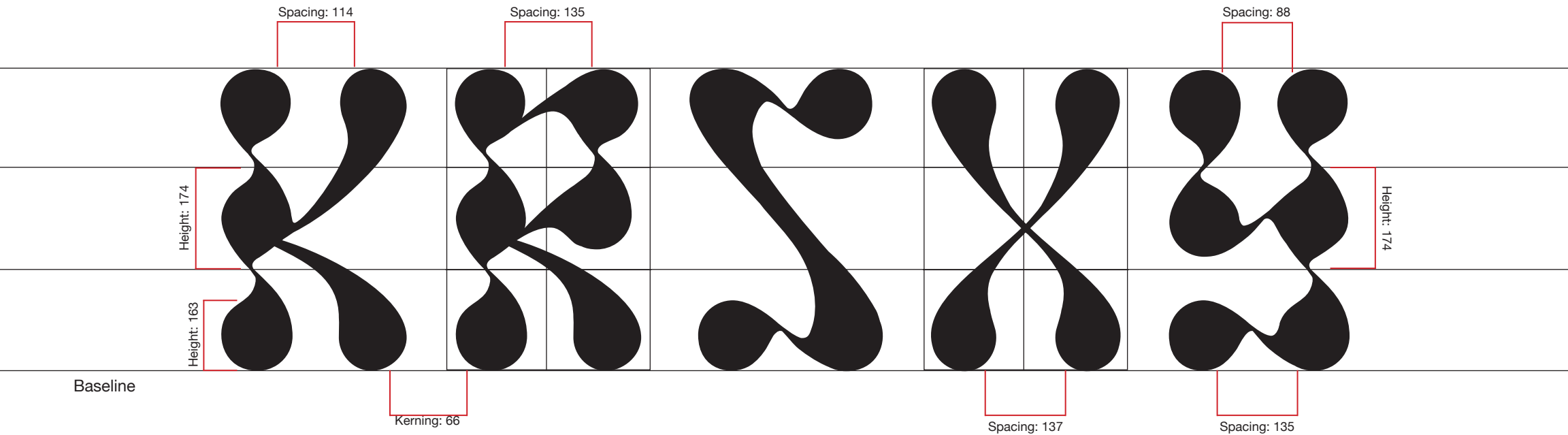


The System

## The System

The Whirlwind Typeface is made on the braille grid system which consists of two columns and three rows. Each letter form is created out of repeated tear drop shapes, some of which are extended and shaped to help create the form of the letter. Each base of the tear drop shape is made out of braille dots which help visually show the underlying braille system. With Whirlwind Integrated, braille dots were added to each letter form and sized down to fit inside of the letter so that they can visually be seen in the letter form. Not only that, but if this typeface were to be printed, those dots would have the opportunity to become three dimensional so that way they could be read by someone who reads using braille. As stated before, the Whirlwind consists of three alternative versions Whirlwind Braille, Whirlwind Regular, and Whirlwind Integrated. Each of these versions are best viewed in large scale with the smallest size not being any smaller than 25pt.





This mono spaced typeface is visually tall with small kerning in between the letter forms. The kerning between each of the letters l s approximately 66. Each tear drop shape on the ends have a height of 163 while the middle tear drop shapes (also can be called hurricane

symbol shapes) have a height of 174. When added together, the total height is 500. Unlike most typefaces, Whirlwind doesn't have an x-height, ascenders, or descenders with all the letterforms being the same height.

125pt W W W W W W W W W W

105pt W W W W W W W W W W

85pt W W W W W W W W W W

65pt W W W W W W W W W W

45pt W W W W W W W W W W

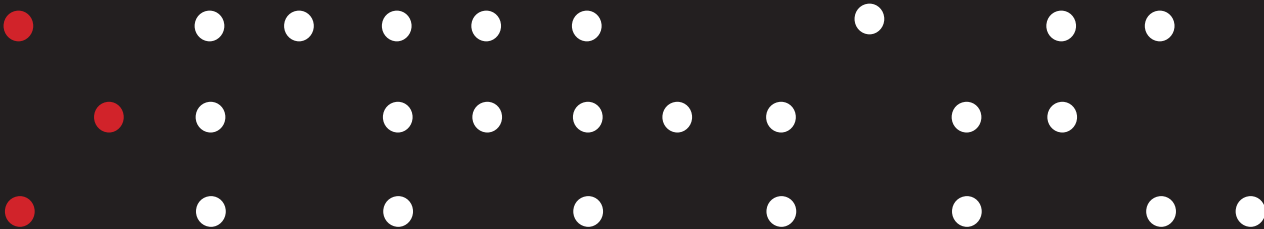
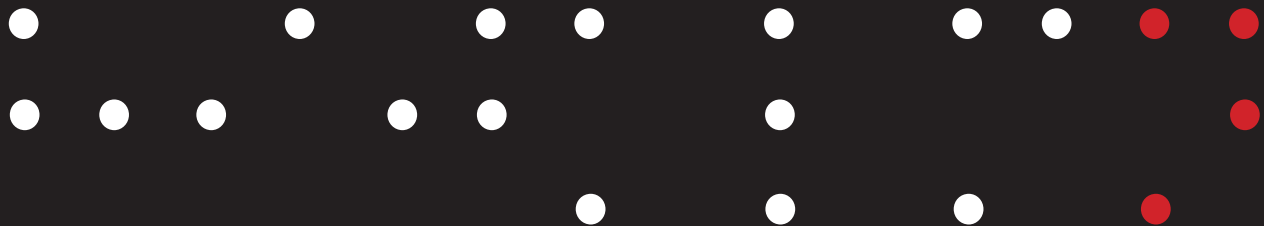
25pt W W W W W W W W W W





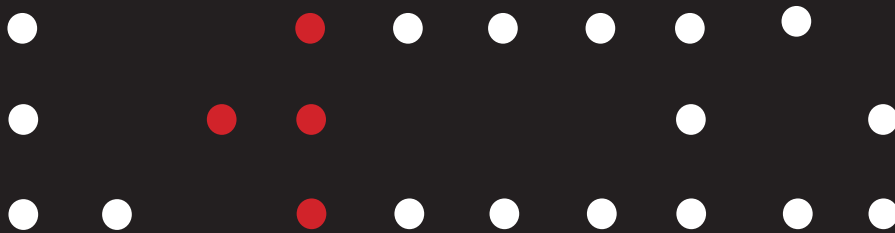


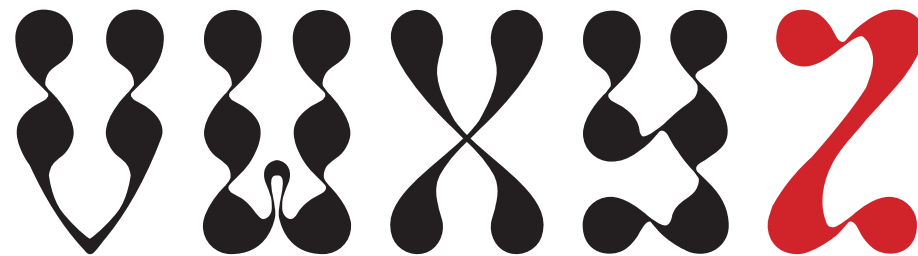
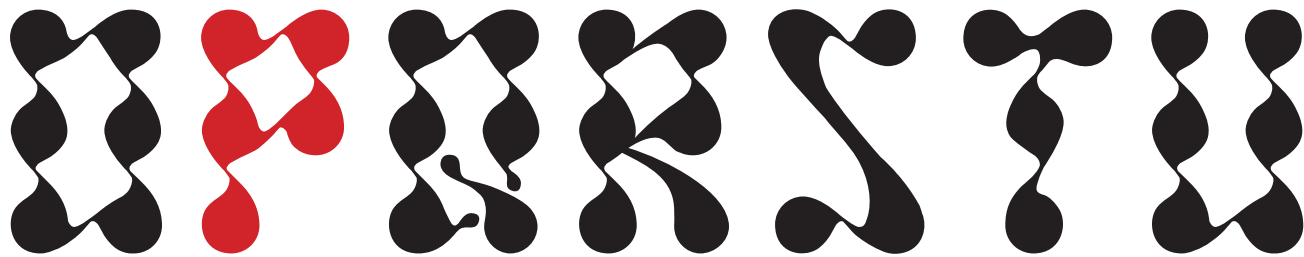
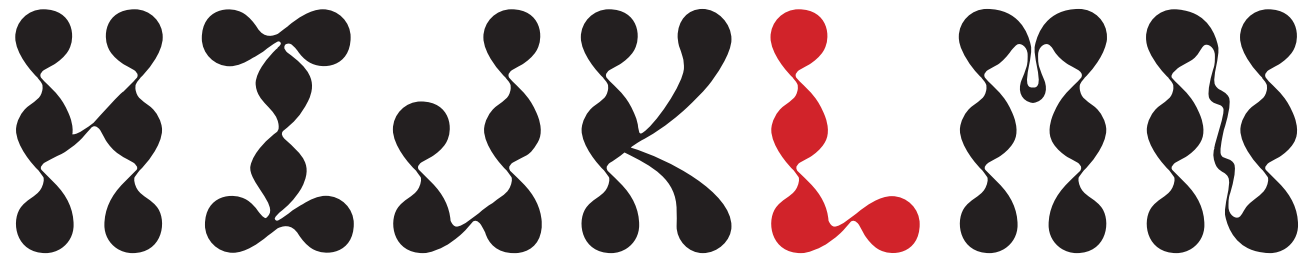
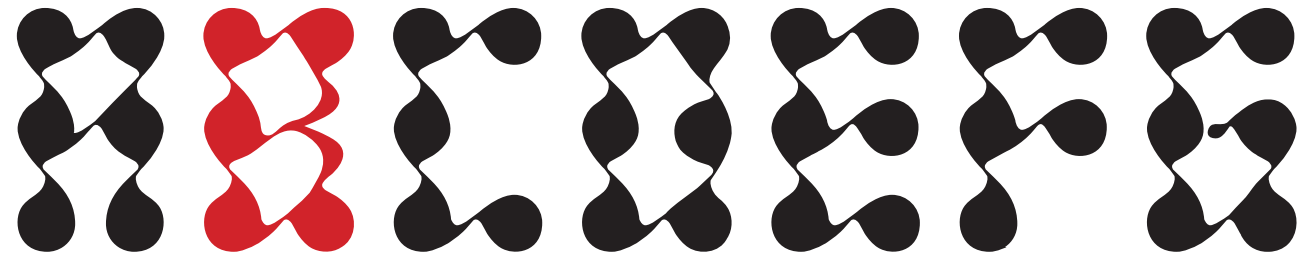
The Specimen



## Whirlwind Braille

Whirlwind Braille is where the journey of the Whirlwind typeface began. Whirlwind braille was made to accommodate the Whirlwind typeface, so the dots have been made smaller in order to fit comfortably inside of the Whirlwind typeface.





## Whirlwind **Regular**

Whirlwind is the result of connecting the dots from braille in an organic manner. This typeface is very much a display typeface and is most legible in larger type sizes. This typeface is intended to be used in posters for a variety of events like dances and concerts and on CDs and albums.



## Whirlwind **Integrated**

Whirlwind integrated is the result of combining Whirlwind Braille and Whirlwind together. Just like Whirlwind, this typeface is intended to be used in posters for events like dances and concerts and on CDs and albums.

